

www.se.com
W9 1378085 0511 A08
05 - 2021

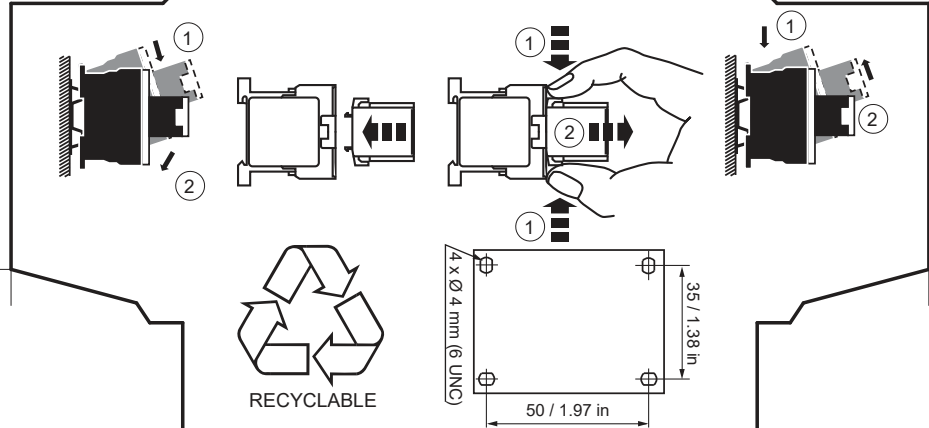
For Motor Starting Use Schneider Electric
Overload Relay Series LR.
电动机启动请使用施耐德电气LR系
列过载继电器。

**HAZARD OF ELECTRIC SHOCK, EXPLOSION,
OR ARC FLASH / 危险 / 爆炸 / 电弧闪**
Disconnect all power before servicing equipment.
Failure to follow these instructions will result in
death or serious injury.
电击、爆炸或电弧闪光危险
在此电力设备上进行操作时，请先断开所有电源。
不遵循上述说明将导致人员伤亡。

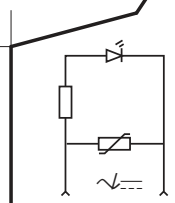
Philips N 2							Ø6		
mm	mm ²	mm ²	mm ²	mm ²	mm ²	mm ²	C	L	Ø
1 x 6,35	0,34	0,34...	0,75	0,75...	1,5	1,5...	7	7	3
2 x 2,8	·	2,5	·	4	·	4	1.3	7	3
	·	+	·	+	·	+			
	2,5	0,34...	4	0,75...	4	1,5...			
		1,5		4		4			

AWG : 1 x 18 min, 2 x 14 or 1 x 12 max
规格: 1 x 18最小值, 2 x 14或1 x 12最大值
Torque 1.3 N.m (12 lb-in) max
扭矩: 1.3 N.m (12 lb-in) 最大值

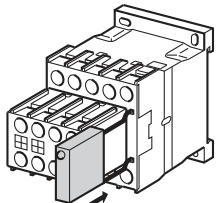
3P AC TeSys K contactors are grade 2 according
to GB 21518.
Maximum power consumption lower
than 5.0 VA.
根据 GB 21518 标准,
三极 TeSys K 系列交流接触器能效等级为 2 级,
产品最大功耗功率低于 5.0 VA



WARNING / 警告
**RISK OF FIRE OR ELECTRIC SHOCK (FOR CONTACTOR WITH
UL HI-FAULT SHORT CIRCUIT CURRENT RATINGS ONLY)**
The opening of the branch-circuit protective device may be an
indication that a fault current has been interrupted.
To reduce the risk of fire or electric shock, current-carrying parts and
the other components of the controller should be examined and
replaced if damaged.
**Failure to follow these instructions can result in death, serious
injury, or equipment damage.**
可能有火灾或者触电的危险 (仅限 UL 高故障短路电流额定值的接触器)。
支路保护设备断开, 表明故障电流已被中断。
为降低火灾或触电风险, 应检查带电部件和其它控制元件, 如有损坏,
需及时更换。
不遵循上述说明可能导致人员伤亡或设备损坏。

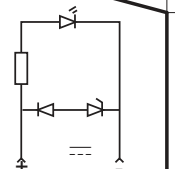


LA4 KE. Schneider Electric Industries SAS
35 Rue Joseph Monier
92506 Rueil Malmaison,
France



- Surge suppressor
- Limiteur de surtension
- Überspannungsbegrenzer
- Limitatore di sovratensione
- Limitador de sobretención
- Limitador de sobretensão
- 浪涌抑制器

Schneider Electric Limited
Stafford Park 5
Telford, TF3 3BL
United Kingdom
www.se.com/uk



LA4 KC.