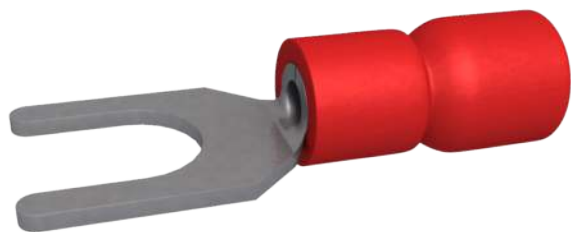


Pre-insulated terminal Fork Red lug. diameter 6 (x 100)



Characteristics

Type : *Fork terminal*  
 Connector material : *Tinned copper*  
 Screw Ø : 6  
 A : 9.5  
 T : 6.4  
 L : 22.2  
 E Ø : 4  
 Ø1 : 1.7  
 Thickness : 0.75  
 Packaging type : *Plastic box*  
 Quantity : 100

Norms

> EN 61210.

Compliance marks



LOGISTIC INFORMATION

Packaging



Plastic box

Height (cm) : 3.5  
 Length (cm) : 10.6  
 Depth (cm) : 8  
 Net weight (kg) : 0.11  
 Gross weight (kg) : 0.12



Outer package 1



x 10.00

Carton box

Height (cm) : 13  
 Length (cm) : 19  
 Depth (cm) : 17  
 Net weight (kg) : 1.14  
 Gross weight (kg) : 1.24



Outer package 2



x 100.00

Carton box

Height (cm) : 35  
 Length (cm) : 70  
 Depth (cm) : 21  
 Net weight (kg) : 11.4  
 Gross weight (kg) : 12.4

