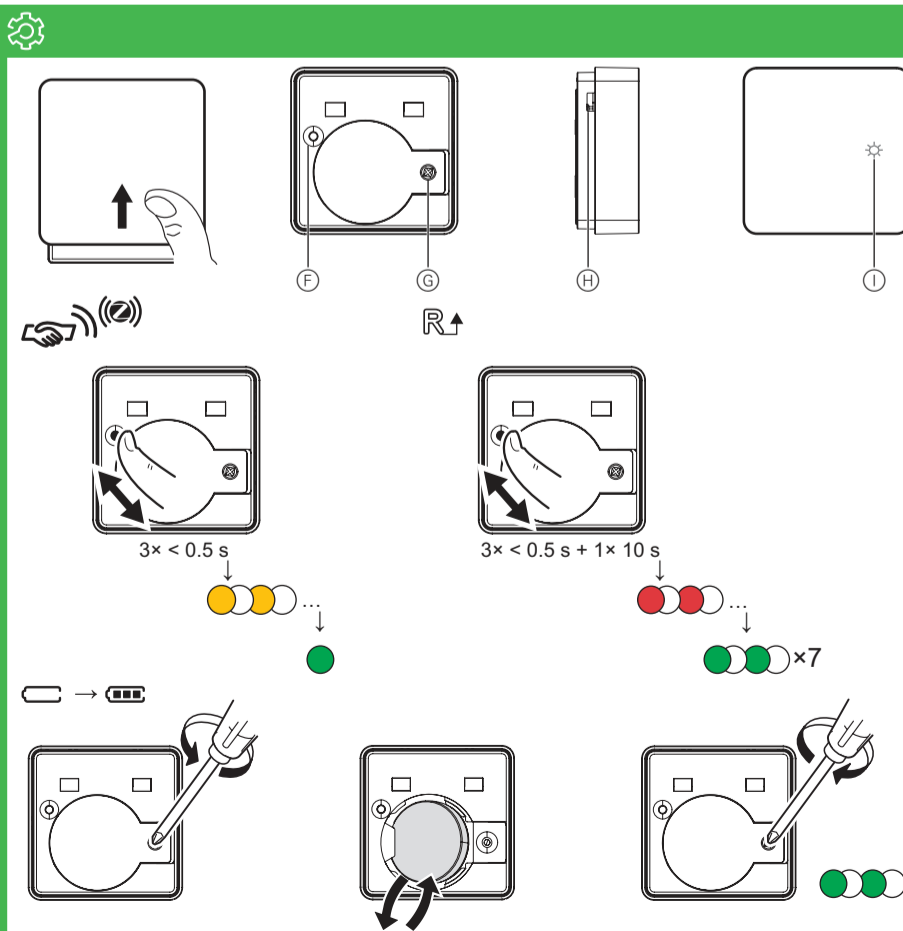
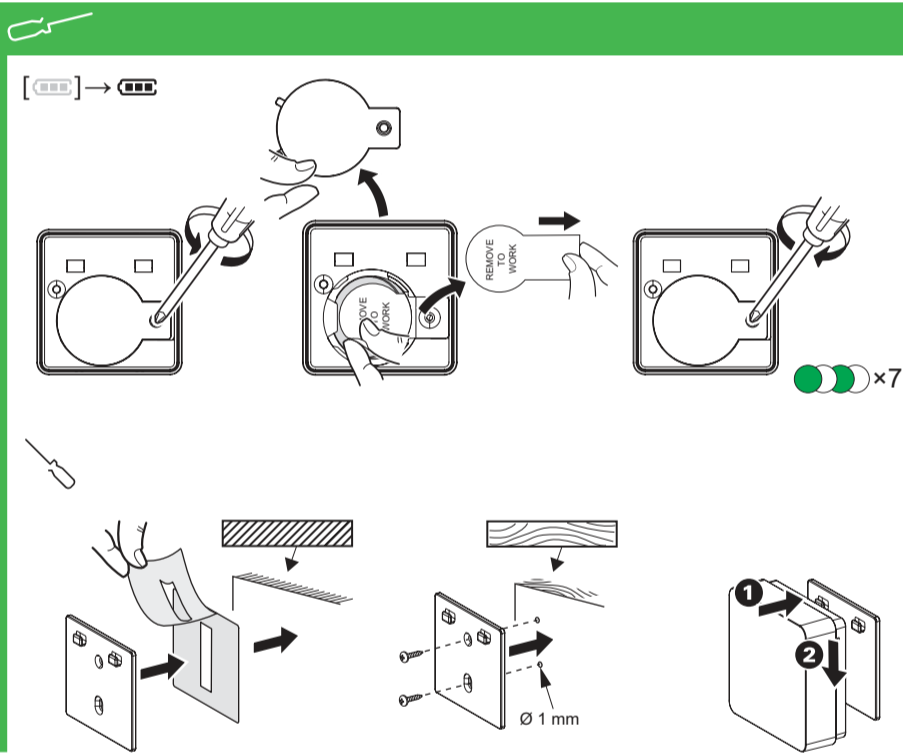
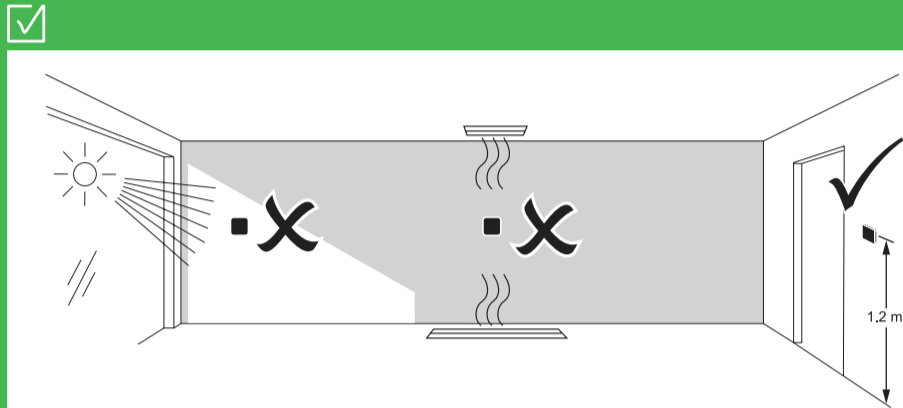
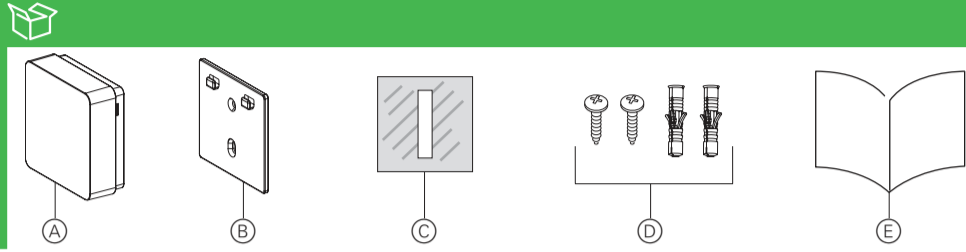


CLP593011
PDL593011

WisFer™



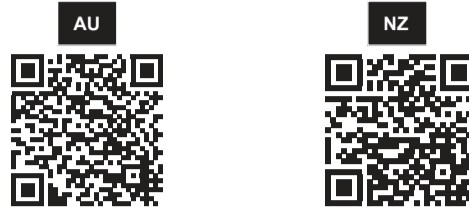
Wiser Temperature/Humidity Sensor

Prerequisites

Download the **Wiser by SE App** to your smartphone and install the **Wiser Gateway/Hub** (hereinafter referred to as **Wiser Hub**) to configure and control Wiser devices.

Additional system information

Detailed product information is available online in the **system user guide**. Scan the QR code for your region.



For your safety

NOTICE

RISK OF DAMAGE TO DEVICE

Always operate the product in compliance with the specified technical data.

Failure to follow these instructions can result in equipment damage.

Getting to know the product

The Wiser Temperature/Humidity Sensor (hereinafter referred to as **sensor**) combines two sensors in one unit.

The sensor measures temperature and humidity in the environment where the sensor is installed. When the sensor is connected to the Wiser Hub, it directly reports temperature and humidity data to the Wiser Hub.

When the battery is low (less than 10%), the status LED blinks orange once per minute, and a message is sent to the Wiser Hub.

Package contents

- A) Sensor
- B) Base plate
- C) Adhesive pad
- D) Screws: 2 × ST4.2 × 25 mm with wall plugs
- E) Installation instructions

Choosing the installation location

Install the sensor as per the suggested location.

- i** Do not install the sensor in a place where there is strong sunlight or wind (for example, close to the ventilation).

Mounting the sensor

Removing the battery isolation strip

Mounting

- i** For wood or plastic surfaces, use either the adhesive pads or the mounting screws.
- If using screws, pre-drill a 1 mm hole.
- For metal surfaces, use the adhesive pads only.

Operating elements

- F) Function key
- G) Base cover screw
- H) Temperature and humidity sensor holes

- i** To ensure accurate temperature and humidity measurement, do not block the sensor holes.

- I) Status LED

Setting the sensor

- i** Remove the sensor by sliding it upwards and rotate it by 180° to access the function key.

Connecting to the Wiser Gateway

- 1 Short press (<math>< 0.5\text{ s}</math>) the function key 3 times by hand or pencil, the status LED blinks amber.
- 2 Add the sensor in the Wiser by SE App and follow the instructions. The status LED turns green when the sensor successfully connects to the Wiser Hub.

Resetting the sensor

Short press (<math>< 0.5\text{ s}</math>) the function key 3 times and then long press the function key once for >10 s to reset the sensor to factory default mode.

- i** All configuration data, user data, and network data will be deleted.

Replacing the battery

Behaviour of the status LED

Refer to the system user guide.

Troubleshooting

Refer to the system user guide.

Technical data

| | |
|--|---|
| Battery | 3 VDC, CR2450 |
| Battery life | Up to 5 years (may vary based on the usage, frequency of firmware update and environment) |
| Nominal power | ≤90 mW |
| Operating frequency | 2405 - 2480 MHz |
| Max. radio-frequency power transmitted | ≤7 dBm |
| IP rating | IP20 |
| Operating temperature | -10 °C to 50 °C |
| Temperature accuracy | ±1.5 °C |
| Temperature resolution | 0.1 °C |
| Relative humidity | 10 % to 95 % |
| Humidity accuracy | ±5 % |
| Dimensions (H × W × D) | 45.0 × 45.0 × 17.2 mm |
| Certification | Zigbee 3.0 |
| Compliance | |

Dispose of the device separately from household waste at an official collection point. Professional recycling protects people and the environment against potential negative effects.

Trademarks

- Zigbee® is a registered trademark of the Zigbee Alliance.
- Apple® and App Store® are brand names or registered trademarks of Apple Inc.
- Google Play™ Store and Android™ are brand names or registered trademarks of Google Inc.
- Wiser™ is a trademark and the property of Schneider Electric SE, its subsidiaries and affiliated companies.

Other brands and registered trademarks are properties of their relevant owners.

Customer Care

Warranty information

We warrant this product for 1 year. See **Warranty** links below.

Schneider Electric (Australia) Pty Ltd

33-37 Port Wakefield Road, Gepps Cross SA 5094

Customer Care: 13 73 28

Email: customer-care.au@se.com

Warranty:

<https://www.se.com/au/en/about-us/legal/terms-and-conditions.jsp>

www.se.com

Schneider Electric (NZ) Ltd

Building 6, 60 Highbrook Drive, East Tamaka, Auckland 2013

Customer Care: 0800 652 999

Email: sales@nz.schneider-electric.com

Warranty:

<https://www.se.com/nz/en/about-us/legal/terms-and-conditions.jsp>

www.se.com