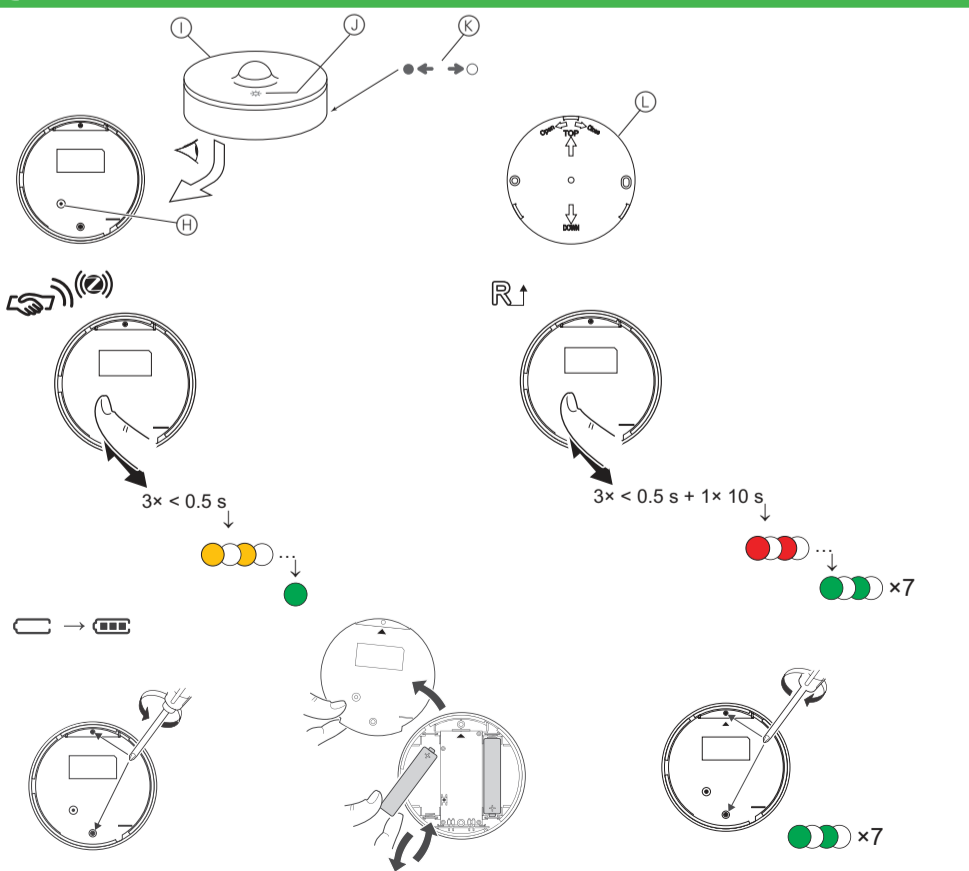
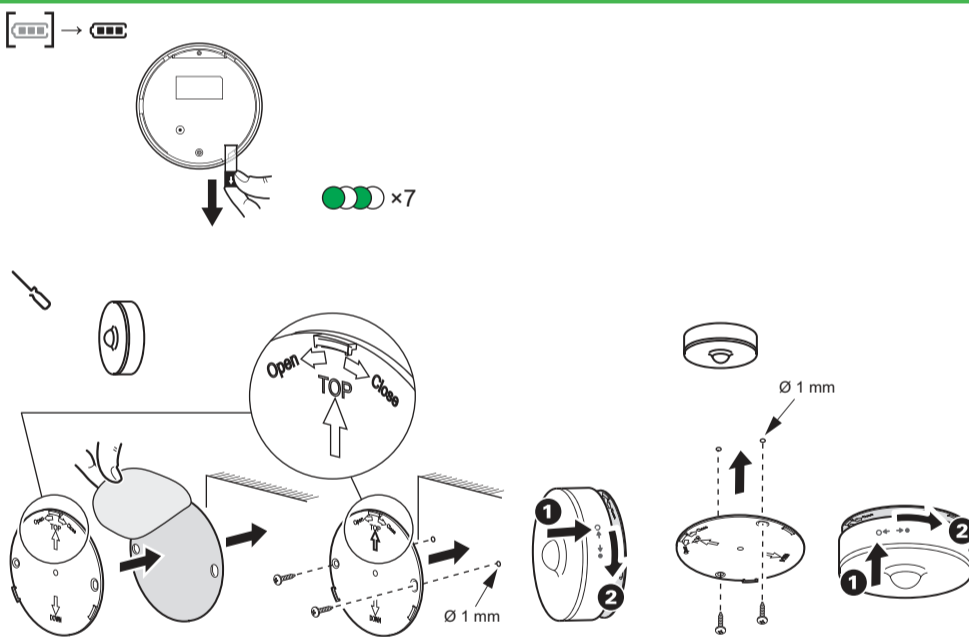
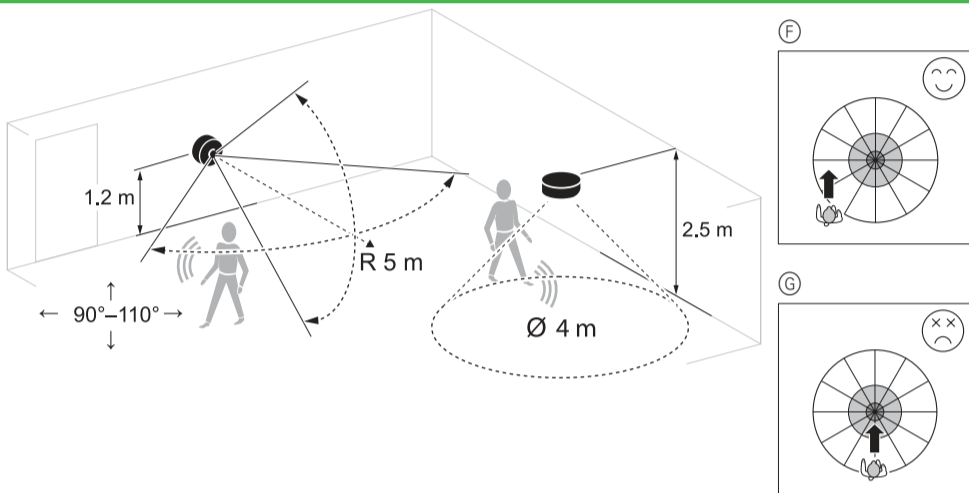
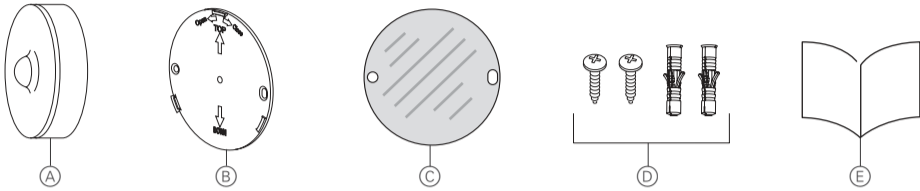


CLP595011
PDL595011

Wiser



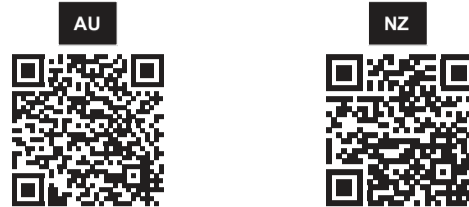
Wiser Motion Sensor

Prerequisites

Download the **Wiser by SE App** to your smartphone and install the **Wiser Gateway/Hub** (hereinafter referred to as Wiser Hub) to configure and control Wiser devices.

Additional system information

Detailed product information is available online in the **system user guide**. Scan the QR code for your region.



For your safety

NOTICE

RISK OF DAMAGE TO DEVICE

Always operate the product in compliance with the specified technical data. **Failure to follow these instructions can result in equipment damage.**

Getting to know the product

The Wiser Motion Sensor (hereinafter referred to as **sensor**) reports the detection of movement to the **Wiser Hub** (and actuator to perform configured functions), measures the luminance of the environment and passes this data to the Wiser Hub. The threshold of luminance settings and/or detection of movement can be programmed to determine what action to be taken at that moment.

When the sensor is connected to the Wiser Hub, it directly reports motion detection data to the hub.

When the battery is low (less than 10%), the status LED blinks orange once per minute, and a message is sent to the Wiser Hub.

Package contents

- (A) Motion sensor
- (B) Base plate
- (C) Adhesive pad
- (D) Screws: 2 × ST4.2 × 25 mm with wall plugs
- (E) Installation instructions

Choosing the mounting location

The sensor can be mounted on a wall or ceiling to provide desired coverage:

- Ceiling mount provides a 360° detection angle with a maximum range of 4 m diameter.
- Wall mount provides a detection angle of 90° to 110° horizontal and vertical with a maximum range of 5 m radius.

- i** Do not install the sensor in a place where there is strong sunlight or wind (for example, close to ventilation).
- When the ambient temperature is >32 °C, the sensor's ability to measure sensitivity, detection range, and detection angle are degraded.

Walking direction

The PIR sensor is more sensitive to movement across different patterns. On the contrary, the sensor is less sensitive when movement is directly towards the sensor, since the range is reduced.

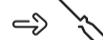
- (F) More sensitive to movement across the pattern
- (G) Less sensitive to movement directly towards sensor

Mounting the sensor

Removing the battery isolation strip



Mounting



- i** For wood or plastic surfaces, use either the adhesive pads or mounting screws.
- If using screws, pre-drill a 1 mm hole.
- For metal surfaces, use the adhesive pads only.

Operating elements

- (H) Function key
- (I) Sensor
- (J) Status LED
- (K) Base plate lock/unlock instruction:
 - ← Turn to lock into base plate
 - ○ Turn to unlock from base plate
- (L) Base plate

Setting the sensor

- i** Remove the sensor from the base plate to access the function key (H).

Connecting to the Wiser Hub



- ① Short press (< 0.5 s) the function key 3 times by hand or pencil, the status LED blinks amber.
- ② Add the sensor in the Wiser by SE App and follow the instructions. The status LED turns green when the sensor successfully connects to the Wiser Hub.

Resetting the sensor

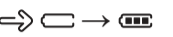


Short press (< 0.5 s) the function key 3 times and then long press the function key once for >10 s to reset the sensor to factory default mode.



All configuration data, user data, and network data are deleted.

Replacing the batteries



While refastening the battery cover make sure the triangle marks on the battery cover and the PCBA align.

Behaviour of the status LED



Refer to the system user guide.

Troubleshooting



Refer to the system user guide.

Technical data

Battery	3 VDC, LR03 AAA ×2
Battery life	Up to 5 years (may vary based on the usage, frequency of firmware update and environment)
Nominal power	≤90 mW
IP rating	IP20
Operating frequency	2405 - 2480 MHz
Max. radio frequency power transmitted	≤7 dBm
Operating temperature	-10 °C to 50 °C
Relative humidity	10 % to 95 %
Lux measurement range	0 lx to 2000 lx
Lux resolution	1 lx
Dimensions	Ø 75.0 × 26.6 mm
Certification	Zigbee 3.0
Compliance	

Ceiling mounted at 2.5 m

Detection angle	360°
Detection range	Ø 4 m

Wall mounted at 1.2 m

Detection angle	90° to 110° horizontal and vertical
Detection range	5 m in radius



Dispose of the device separately from household waste at an official collection point. Professional recycling protects people and the environment against potential negative effects.

Trademarks

- Zigbee® is a registered trademark of the Zigbee Alliance.
- Apple® and App Store® are brand names or registered trademarks of Apple Inc.
- Google Play™ Store and Android™ are brand names or registered trademarks of Google Inc.
- Wiser™ is a trademark and the property of Schneider Electric SE, its subsidiaries and affiliated companies.

Other brands and registered trademarks are properties of their relevant owners.

Customer Care

Warranty information

We warrant this product for 1 year. See **Warranty** links below.

Schneider Electric (Australia) Pty Ltd

33-37 Port Wakefield Road, Gepps Cross SA 5094

Customer Care: 13 73 28

Email: customercare.au@se.com

Warranty:

<https://www.se.com/au/en/about-us/legal/terms-and-conditions.jsp>
www.se.com

Schneider Electric (NZ) Ltd

Building 6, 60 Highbrook Drive, East Tamaka, Auckland 2013

Customer Care: 0800 652 999

Email: sales@nz.schneider-electric.com

Warranty:

<https://www.se.com/nz/en/about-us/legal/terms-and-conditions.jsp>
www.se.com